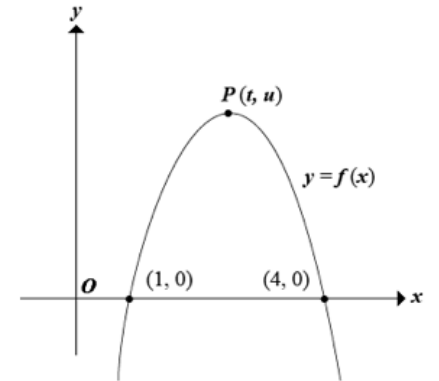
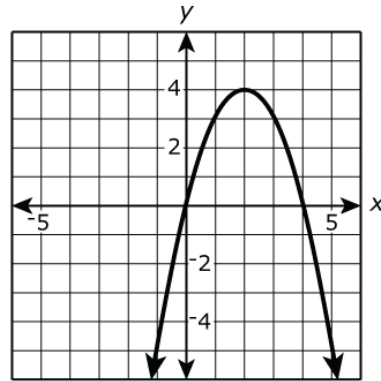
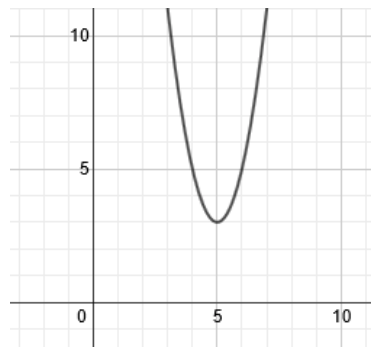
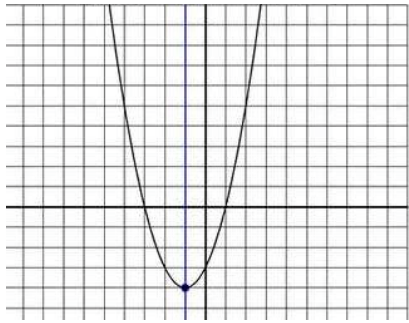

<p>Not a parabola</p>	<p>Linear equation</p>	<p>Parabola that passes through origin</p>	<p>Parabola with 2 zeroes</p>
<p>Includes the point (30, 1.4)</p>	<p>Includes the point (10, 10)</p>	<p>Includes the point (-1, -5)</p>	<p>Includes the point (1, 0)</p>
<p>Begins to lose oxygen rapidly after about 1.5 minutes</p>	<p>y intercept = (0,0) slope = 1</p>	<p>Vertex (2,4)</p>	<p>Vertex (2.5, u)</p>






--	--	--	--

--	--	--	--

x	y

x	y

x	y

x	y

